

Telescopic 3



features & benefits

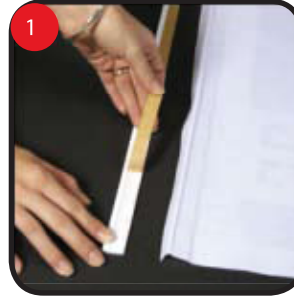
31" Double-sided Telescopic Banner Stand with snap rails & bag

hardware specifications	graphic specifications	additional info
Max height: 84.75 Foot print: 39.75" X 16.75"	38.75"w x 85.75"h	Shipping weight: 49.5 lbs. Shipping dim: 50" x 10.5" x 15"

We are continually improving and modifying our product range and reserve the right to vary the specifications without prior notice. All dimensions and weights quoted are approximate and we accept no responsibility for variance. E&OE.

Assembly Instructions

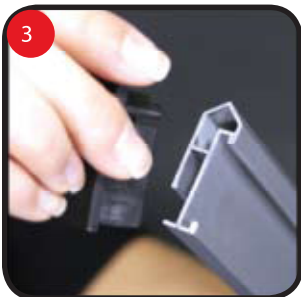
Graphic Application



1
Remove paper backing from the tape on the graphic rail.



2
Hover top of the graphic over the graphic rail to line up the graphic and graphic rail. (Front of graphic attaches to graphic rail).



3
Remove 1 end cap from the top rail extrusion (bottom rail has legs)



4
Fold graphic rail in front of graphic 1 half turn and slide into top extrusion



5
Replace end cap (repeat steps 1-5 for bottom section of the graphic)

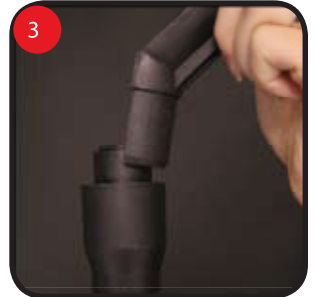
Unit Instructions



1
Insert and secure 1 pole arm into the bottom rail extrusion.



2
Bring together both pole arms and attach to the bottom of the telescopic pole.



3
Insert and secure another pole arm onto the top of the telescopic pole.



4
Insert and secure the top graphic rail extrusion to the top pole arm.



6
Unlock telescopic pole and extend, then lock at the desired height.

Repeat steps in reverse to retract and Store