

# Retractor 2

Inexpensive and quick to assemble, this banner stand is the perfect solution for a steady, on the go display.



## Features & Benefits

- Easy to assemble and transport
- Standard height and width
- Swivel foot base
- Affordable

## Dimensions

Display Dimensions  
33" w x 14.5" d x 83.75" - h  
838.2mm w x 368.3mm d x 2127.25mm - h

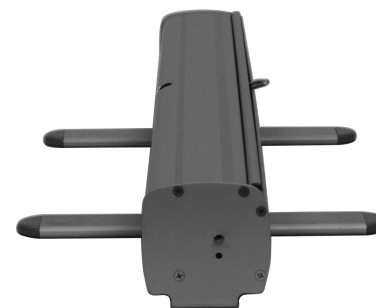
Graphic Dimensions  
77.5" h x 31" - w      1968.5mm h x 787.4mm - w  
plus 1/2" bleed at the top and 6" bleed at the bottom

## Additional Information

Shipping Information  
Shipping Size: 37" x 11" x 16"    939.8mm x 279.4mm x 406.4mm  
Shipping Weight: 7 lbs.    3.18kg

Graphic Information:  
Recommended substrate: Smooth vinyl or cotton

Includes: base, pole, top rail



We are continually improving and modifying our product range and reserve the right to vary the specifications without prior notice. All dimensions and weights quoted are approximate and we accept no responsibility for variance. E&OE. See Graphic Templates for graphic bleed specifications.

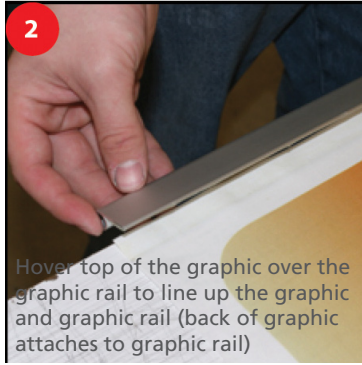
## Graphic Application

1



Remove paper backing from the tape on the graphic rail

2



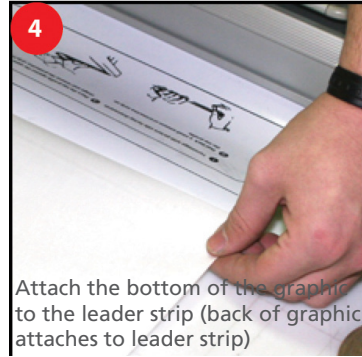
Hover top of the graphic over the graphic rail to line up the graphic and graphic rail (back of graphic attaches to graphic rail)

3



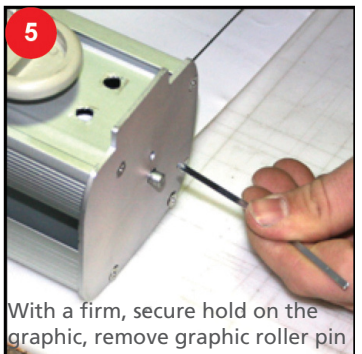
Remove paper backing from the tape on the leader strip

4



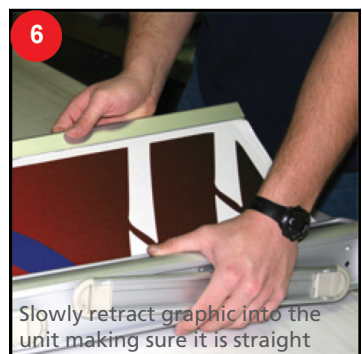
Attach the bottom of the graphic to the leader strip (back of graphic attaches to leader strip)

5



With a firm, secure hold on the graphic, remove graphic roller pin

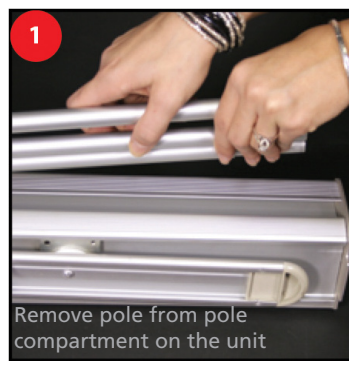
6



Slowly retract graphic into the unit making sure it is straight

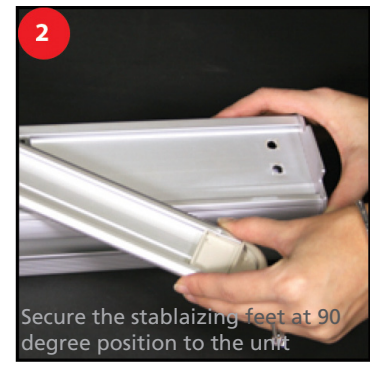
## Unit Instructions

1



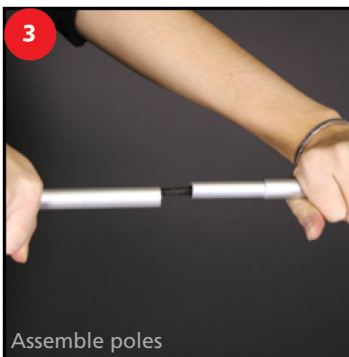
Remove pole from pole compartment on the unit

2



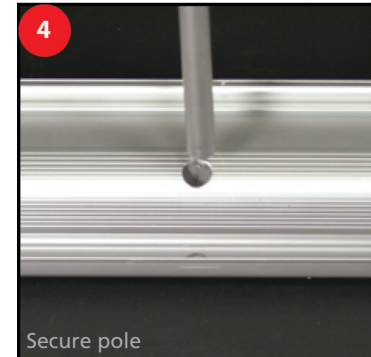
Secure the stabilizing feet at 90 degree position to the unit

3



Assemble poles

4



Secure pole

5



Gently un-retract graphic from unit

6



Secure the graphic rail to the top of the pole