

Retractor 6

Retractor 6 is a retractable banner stand with an attractive black base. With a snap-edge graphic rail, it holds substrates securely.



Features & Benefits

- Snap-edge graphic rail
- Twin feet for excellent balance and stability
- Lightweight constructions
- Black finish
- Quick to assemble and easy to use
- Carry bag included

Dimensions

Hardware Dimensions: 83"h x 31.25"w x 11.2"d

Weight: 7.7 lbs (including bag)

Visible Graphic Dimensions: 78.5"h x 31.25"w, add .75" bleed at top and 6" bleed at bottom

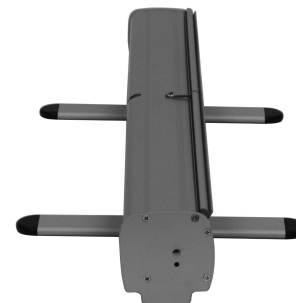
Substrate: 13 oz. smooth vinyl or 7 oz. cotton

Additional Information

Shipping Dimensions: 13" x 8.7" x 33.5"

Shipping Weight: 10 lbs

Included in kit: base, bungee pole, rail, carry bag



We are continually improving and modifying our product range and reserve the right to vary the specifications without prior notice. All dimensions and weights quoted are approximate and we accept no responsibility for variance. E&OE. See Graphic Templates for graphic bleed specifications.

Graphic Application

1



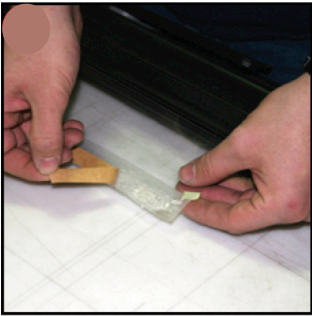
open graphic rail and insert graphic into graphic rail

2



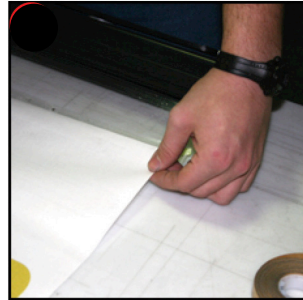
firmly press down on graphic rail to close

3



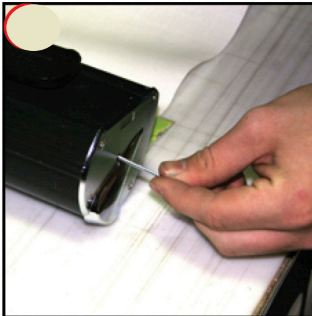
remove paper backing from the tape on the leader strip

4



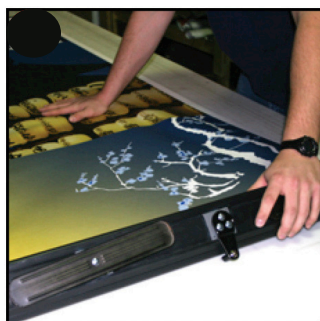
attach the bottom of the graphic to the leader strip (back of graphic attaches to leader strip)

5



with a firm, secure hold on the graphic, remove the graphic roller pin

6



slowly retract the graphic into the unit making sure it is straight

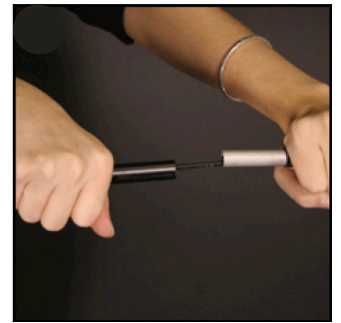
Unit Instructions

7



secure the stabilizing feet at 90 degree position to the unit

8



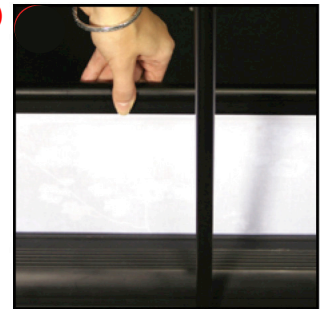
assemble poles

9



secure pole onto the pole pin

10



gently pull graphic up from unit

11



secure the graphic rail to the top of the pole